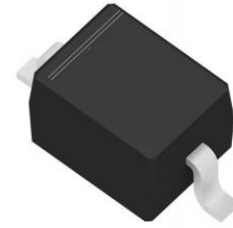
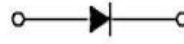


SMD SWITCHING DIODE

Parameter	Value	Unit
V_R	100	V
I_F	150	mA



SOD-323

Features

- Fast Switching Speed
- Surface Mount Package Ideally Suited for Automatic Insertion
- For General Purpose Switching Applications
- High Conductance

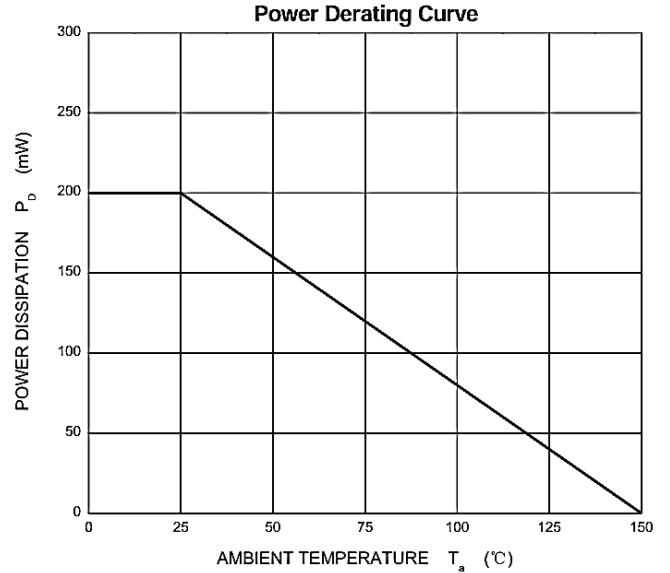
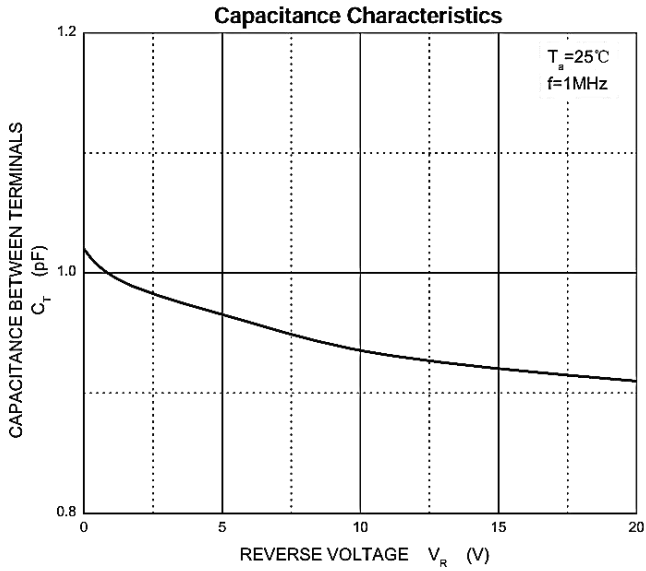
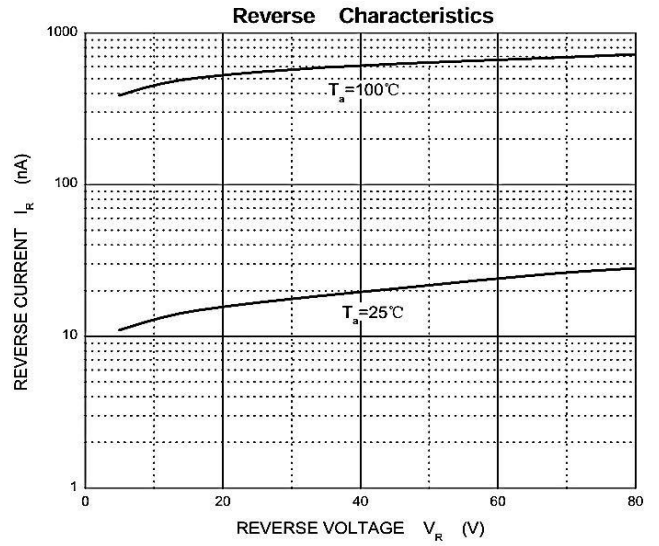
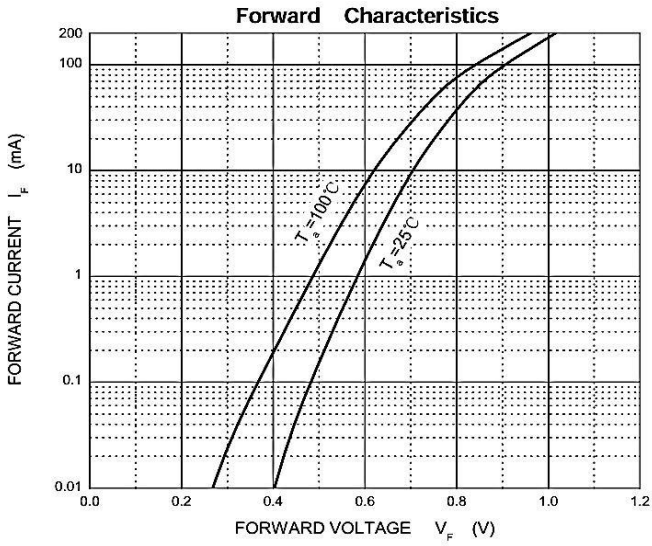
Absolute Maximum Ratings (Ta=25°C unless otherwise noted)

Parameter	Symbol	Value	Unit
Non-Repetitive Peak reverse voltage	V_{RM}	100	V
Peak Repetitive Peak reverse voltage Working Peak Reverse Voltage DC Blocking Voltage	V_{RRM} V_{RWM} V_R	100	V
RMS Reverse Voltage	$V_{R(RMS)}$	75	V
Forward Continuous Current	I_{FM}	300	mA
Average Rectified Output Current	I_O	150	mA
Peak forward surge current @=1.0μs @=1.0s	I_{FSM}	2.0 1.0	A
Power Dissipation	P_D	200	mW
Thermal Resistance from Junction to Ambient	$R_{\theta JA}$	625	°C/W
Junction temperature	T_j	150	°C
Storage temperature	T_{STG}	-55~+150	°C

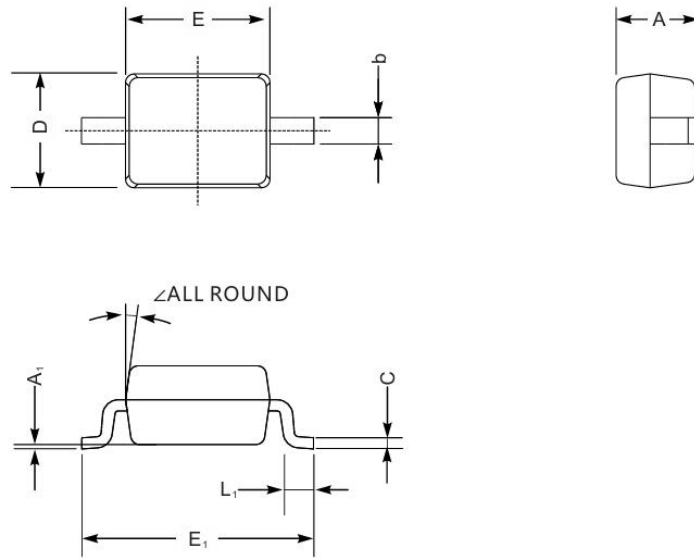
Electrical Characteristics (Ta=25°C unless otherwise noted)

Parameter	Symbol	Test Conditions	Min	Typ	Max	Unit
Forward voltage	V_{F1}	$I_F=1mA$			0.715	V
	V_{F2}	$I_F=10mA$			0.855	V
	V_{F3}	$I_F=50mA$			1.0	V
	V_{F4}	$I_F=150mA$			1.25	V
Reverse current	I_{R1}	$V_R=75V$			1	μA
	I_{R2}	$V_R=20V$			25	nA
Capacitance between terminals	C_T	$V_R=0V, f=1MHz$			2	pF
Reverse recovery time	t_{RR}	$I_F=I_R=10mA$ $I_{RR}=0.1 \times I_R, R_L=100\Omega$			4	ns

Typical Characteristics



Package Outline



Unit		A	C	D	E	E1	b	L1	A1	∠
mm	max	1.1	0.15	1.4	1.8	2.75	0.4	0.45	0.2	9°
	min	0.8	0.08	1.2	1.4	2.55	0.25	0.2		
mil	max	43	5.9	55	70	108	16	16	8	
	min	32	3.1	47	63	100	9.8	7.9		

***Important Usage Information and Disclaimer**

The specifications of Zhuhai Hypersemi Co., Ltd. products are not guarantees of product characteristics. They reflect typical performance expected in standard applications, which may vary with specific uses. Users must conduct prior testing for their applications and make necessary adjustments.

Users are responsible for the safety of applications utilizing our products and must implement adequate safety measures to prevent physical injury, fire, or other risks in case of product failure. It is the user's duty to ensure that application designs comply with all applicable laws and standards. Our products must not be used in any applications where a product failure could reasonably result in personal injury, unless specifically authorized in a signed document by Zhuhai Hypersemi Co., Ltd.

No representations or warranties are made regarding the accuracy or completeness of this information, including any claims of non-infringement of third-party intellectual property rights. Zhuhai Hypersemi Co., Ltd. assumes no liability for any applications or uses of its products and does not grant any licenses to its intellectual property rights or those of others. We also make no claims regarding non-infringement of third-party intellectual property rights that may arise from applications.

Due to technical requirements, our products may contain hazardous substances. For details, please contact your nearest sales office. This document replaces all previous information and may be updated. We reserve the right to make changes.